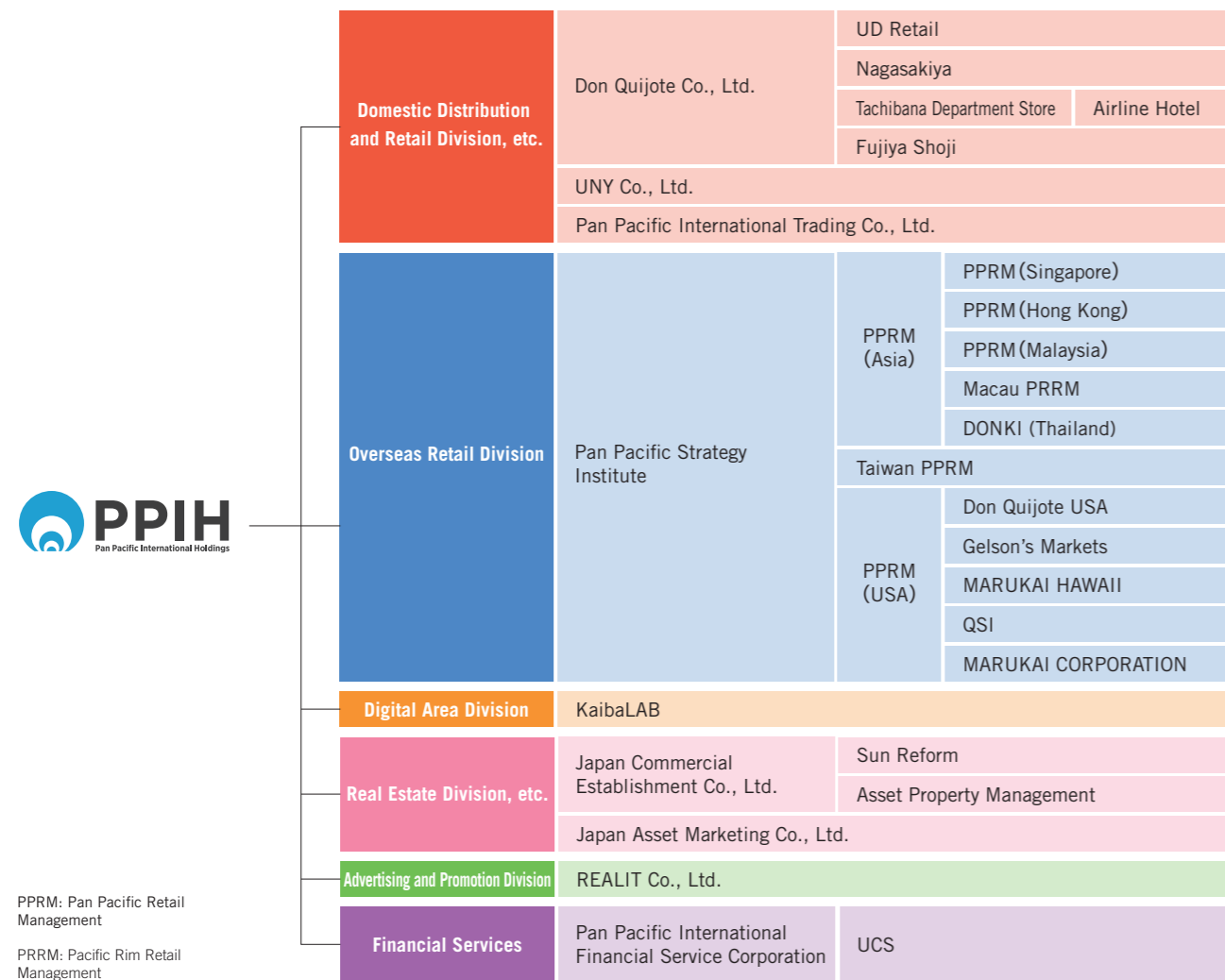


Corporate and Stock Information (As of June 30, 2023)

Major companies and business domains



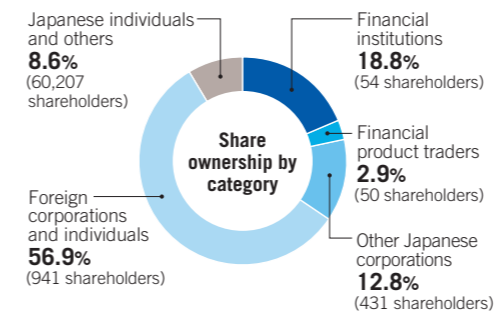
Corporate data

Company name	Pan Pacific International Holdings Corporation	Date of establishment	September 5, 1980
Business activities	Corporate planning for and management of Group companies through the holding of shares in such companies, contracted administrative operation of subsidiaries, and real estate management	Paid-in capital	¥23,351 million
Head office	2-19-10 Aobadai, Meguro-ku, Tokyo 153-0042, Japan Phone: +81-3-5725-7532 Fax: +81-3-5725-7322	Fiscal year-end	June 30
		Number of employees	Non-consolidated: 2,860 Consolidated: 17,107

Stock and shareholder information

Stock information	
Shares authorized	1,872,000,000
Shares issued	634,666,240
Treasury stock	38,073,224
Number of shareholders	61,683

* The number of shareholders increased by 13,846 from June 30, 2022.



* Shares held by Japanese individuals and others include treasury stock (38,073,224 shares).

Principal shareholders

Name	Number of shares held	Percentage of total shares in issue (%)
CREDIT SUISSE AG HONG KONG TRUST A/C CLIENTS FOR DQ WINDMOLEN B. V.	134,028,000	22.47
The Master Trust Bank of Japan, Ltd. (Trust Account) *	68,810,800	11.53
Pan Pacific International Holdings Corporation	38,073,224	-
Custody Bank of Japan, Ltd. (Trust Account) *	34,807,700	5.83
Anryu Shoji Co., Ltd.	33,120,000	5.55
FamilyMart Co., Ltd.	33,057,384	5.54
JP MORGAN CHASE BANK 385632	21,474,386	3.60
GIC PRIVATE LIMITED - C	15,999,100	2.68
Yasuda Scholarship Foundation	14,400,000	2.41
STATE STREET BANK WEST CLIENT - TREATY 505234	8,444,536	1.42

Note: Percentage of total shares does not include treasury stock (38,073,224 shares).
 The number of shares held by shareholders with a * symbol includes the number of shares related to the trust business.
 The numbers of shares held by shareholders whose actual shareholdings can be confirmed by our company are shown in the status of principal shareholders above.

Store Network

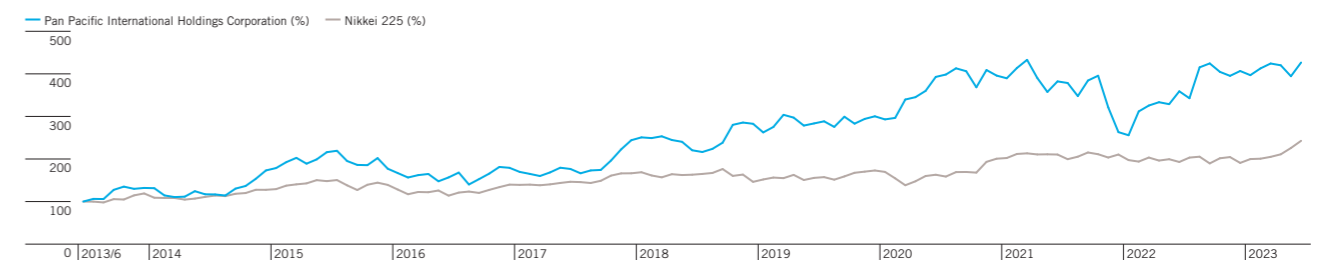
Number of Group stores **718** stores

Domestic	
Japan: 617 stores	
Don Quijote	250
MEGA Don Quijote*1	140
MEGA Don Quijote UNY*1	63
Apita, Piago*1	131
Picasso, etc.*1	33

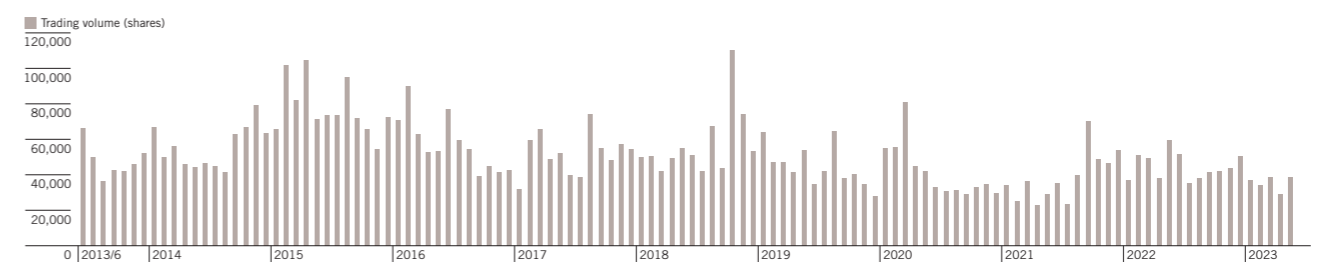
Overseas	
Hong Kong: 9 stores	
DON DON DONKI	9
Thailand: 6 stores	
DON DON DONKI	6
Singapore: 15 stores	
DON DON DONKI	15
Malaysia: 3 stores	
DON DON DONKI	3
Taiwan: 2 stores	
DON DON DONKI	2
Macau: 1 store	
DON DON DONKI	1
Hawaii: 28 stores	
Don Quijote	3
MARUKAI	1
Times*2	24
California: 37 stores	
MARUKAI	4
TOKYO CENTRAL	6
Gelson's	27

*1 "MEGA Don Quijote" includes NEW MEGA Don Quijote, "MEGA Don Quijote UNY" includes Don Quijote UNY, "Picasso, etc." includes Picasso, Essence, Kyoyasudo, Ekidonki, Soradonki, Jonetz Shokunin, Nagasakiya, etc., "Apita, Piago" includes U-STORE, Piago Power, Power Super Piago, etc.
 *2 Big Save and other stores operated by QSI, Inc. are included under the Times format.

Trends in stock price



Trends in trading volume



Note: Share prices have been adjusted to reflect a 2-for-1 stock split conducted on July 1, 2015 and a 4-for-1 stock split conducted on September 1, 2019.