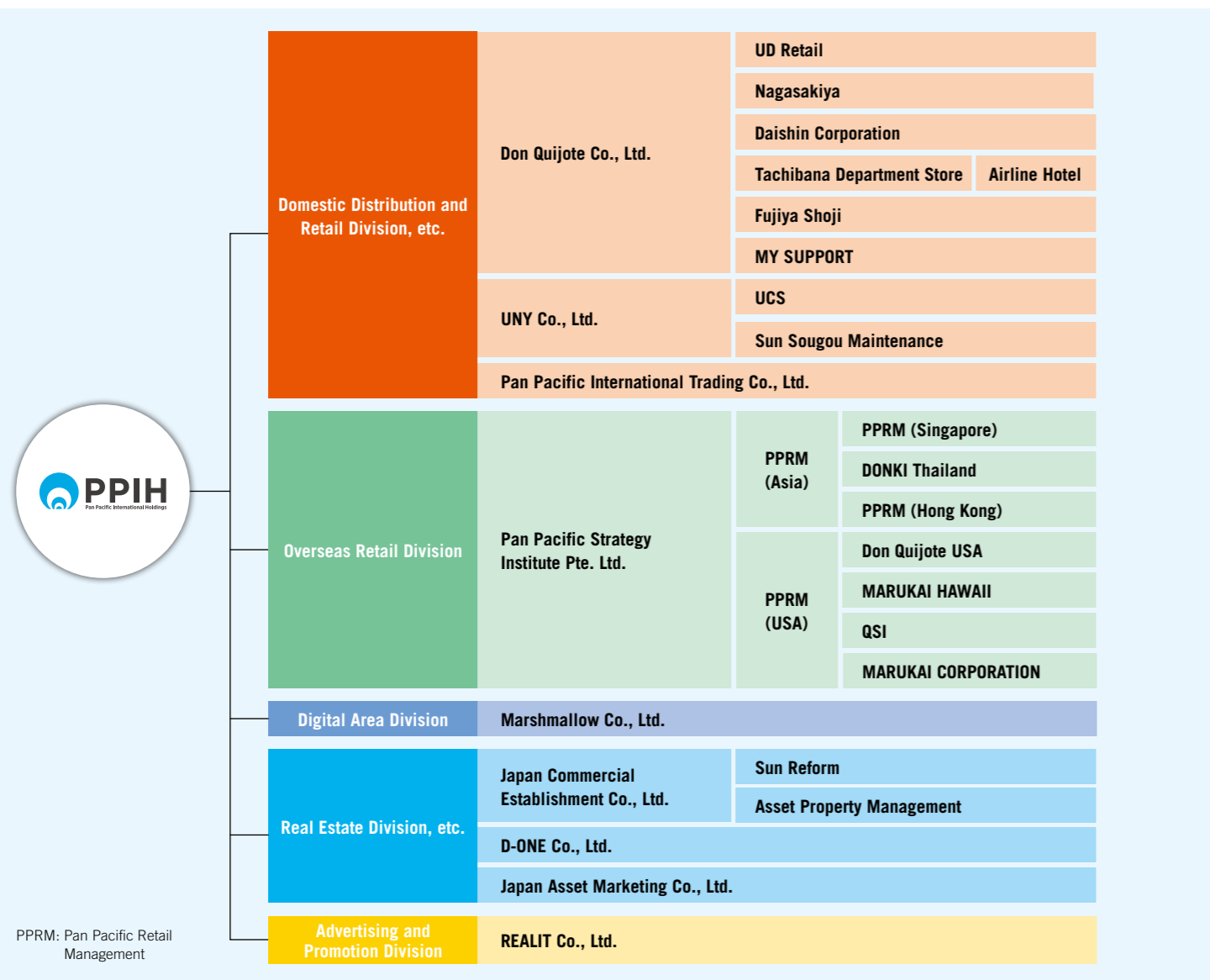


Corporate Information

Major Companies and Business Domains of the PPIH Group (As of December 1, 2020)



Corporate Data (As of June 30, 2020)

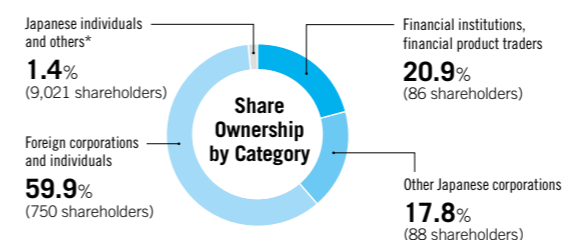
Company Name	Pan Pacific International Holdings Corporation	Date of Establishment	September 5, 1980
Business Activities	Corporate planning for and management of Group companies through the holding of shares in such companies, contracted administrative operation of subsidiaries, and real estate management	Paid-in Capital	¥23,080 million
Head Office	2-19-10 Aobadai, Meguro-ku, Tokyo 153-0042, Japan Phone: +81-3-5725-7532 Fax: +81-3-5725-7322	Fiscal Year-End	June 30
		Number of Employees	Non-consolidated: 1,074 Consolidated: 14,186

Share and Shareholder Information

Share Information

Shares authorized	1,872,000,000
Shares issued	633,929,040
Treasury stock	18,924
Number of shareholders	9,946

Notes: 1. The number of shareholders increased 2,218 from June 30, 2019.
2. The Company conducted a 4-for-1 stock split on September 1, 2019.



* Shares held by Japanese individuals and others include treasury stock (18,924 shares).

Principal Shareholders

Name	Number of shares held	Percentage of total shares issued (%)
CREDIT SUISSE AG HONG KONG TRUST A/C CLIENTS FOR DQ WINDMOLEN B.V.	134,028,000	21.14
FamilyMart Co., Ltd.	64,023,384	10.10
The Master Trust Bank of Japan, Ltd. (Trust Account)*	38,025,200	6.00
Anryu Shoji Co., Ltd.	33,120,000	5.22
Japan Trustee Services Bank, Ltd. (Trust Account)*	31,171,800	4.92
Yasuda Scholarship Foundation	14,400,000	2.27
JP MORGAN CHASE BANK 385632	11,087,850	1.75
Japan Trustee Services Bank, Ltd. (Trust Account 5)*	8,917,300	1.41
GIC PRIVATE LIMITED - C	8,835,200	1.39
JP MORGAN CHASE BANK 385781	8,751,620	1.38

* The number of shares held by trust accounts include shares in trust.

Store Network (As of October 31, 2020)

Number of Group stores **631** stores

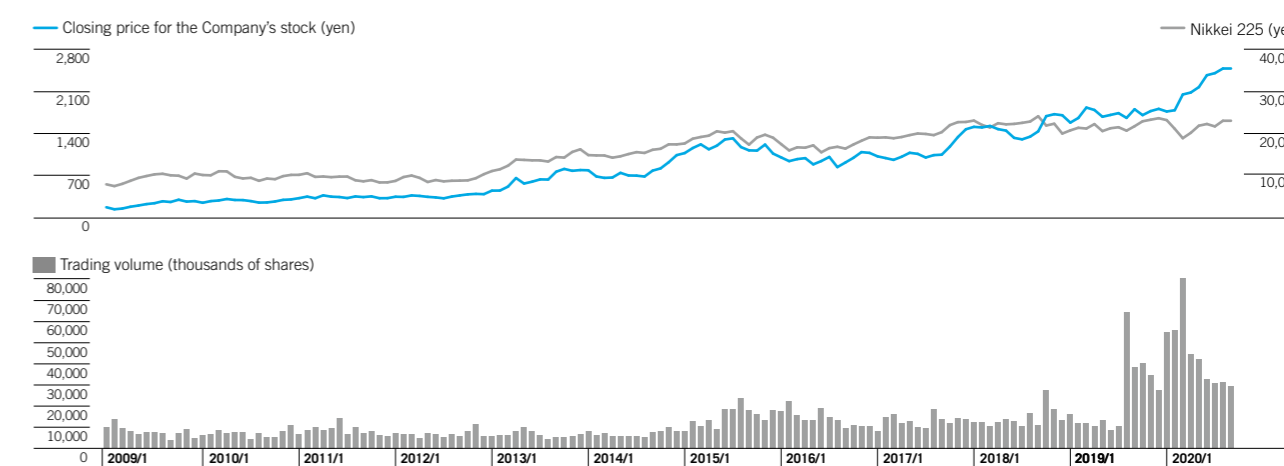
Domestic	
Japan: 579 stores	
Don Quijote	225
MEGA Don Quijote*1	135
MEGA Don Quijote UNY*1	44
Apita / Piago	147
Nagasakiya	3
Picasso*1	25

Overseas	
Hong Kong: 4 stores	
DON DON DONKI	4
Thailand: 2 stores	
DON DON DONKI	2
Singapore: 8 stores	
DON DON DONKI	8
Hawaii: 28 stores	
DON Quijote	3
MARUKAI	1
times*2	24
California: 10 stores	
MARUKAI	4
TOKYO CENTRAL	6

*1 New MEGA Don Quijote is included under the MEGA Don Quijote format. Essence, Kyoyasudo, Ekidonki, Soradonki, and Jonetsu Shokunin are included under the Picasso format.
*2 Big Save and other stores operated by QSI, Inc. are included under the times format.

Stock Price

Data through September 2020



Note: Share prices have been adjusted to reflect a 2-for-1 stock split conducted on July 1, 2015 and a 4-for-1 stock split conducted on September 1, 2019.